



歡

迎參閱第十一期東涌新市鎮擴展—填海及前期工程通訊，本通訊將介紹防止船隻碰撞監察系統，並提供填海工程進度及相關資訊。

Welcome to our eleventh issue of the newsletter for Tung Chung New Town Extension – Reclamation and Advance Works. This issue covers the Collision Prevention Monitoring System for Vessels, progress of reclamation works and relevant information.



防止船隻碰撞監察系統

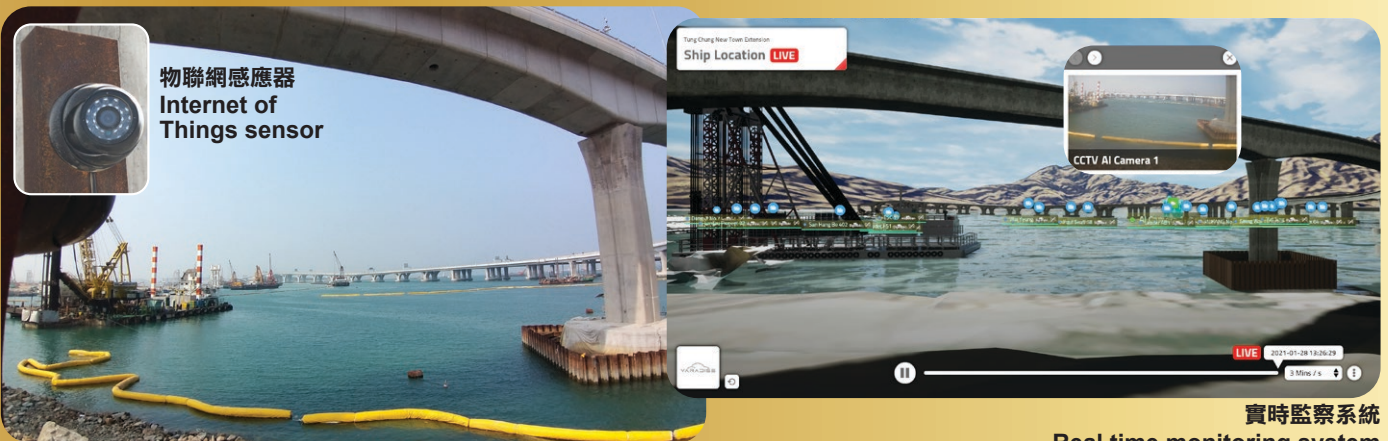
Collision Prevention Monitoring System for Vessels

為防止工程船隻在進行工程時與屯門至赤鱸角連接路(南面連接路)高架橋發生碰撞，本工程設置了防止船隻碰撞監察系統及裝設有物聯網¹感應器，提供實時監察資料並連結到基於建築信息模擬²的管理平台作持續監察工程船隻位置及方向。監察系統能有效地探測及防止船隻與高架橋之間可能發生碰撞，並觸發即時警報，避免意外發生。

To avoid collision of construction works vessels with the viaduct of Tuen Mun - Chek Lap Kok Link (Southern Connection), a Collision Prevention Monitoring System for Vessels with Internet of Things¹ sensors was deployed. The system merges the real time data into a Building Information Modelling² based management platform to continuously monitor the positions and orientations of construction works vessels. The monitoring system effectively detects and prevents potential collision of vessels with the viaduct and triggers immediate alert to avoid accidents.



物聯網感應器 Internet of Things sensor



實時監察系統
Real time monitoring system

使用防止船隻碰撞監察系統實時監察工程船隻位置及方向
Real time monitoring of the positions and orientations
construction works vessels by using the Collision
Prevention Monitoring System for Vessels

備註 Remarks:

1. 物聯網是由電腦裝置、機械及數碼機器、物件、動物或人組成彼此互有關聯的系統，並配備獨特標識符及可在網絡上傳輸數據而無需人與人或人與電腦的互動。
Internet of Things is a system of interrelated computing devices, mechanical and digital machines, objects, animals or people that are provided with unique identifiers and the ability to transfer data over a network without requiring human-to-human or human-to-computer interaction.
2. 建築信息模擬技術屬三維設計及模擬技術程序，就構築物的實體及功能特性建立及管理模擬數碼形象。
Building Information Modelling is a 3-dimensional design and modelling process involving the generation and management of digital representations of physical and functional characteristics of a structure.

新

年

快

樂



工程進度 Works Progress

填海工程進展理想。建造海堤、鋪設填海物料（包括砂墊層及公眾填料）及深層水泥拌合法工程正在進行中。

The progress of reclamation works is satisfactory. Construction of seawall, placing of fill materials (including sand blanket and public fill) and deep cement mixing works are in progress.



填海工程正在進行中
Reclamation works in progress



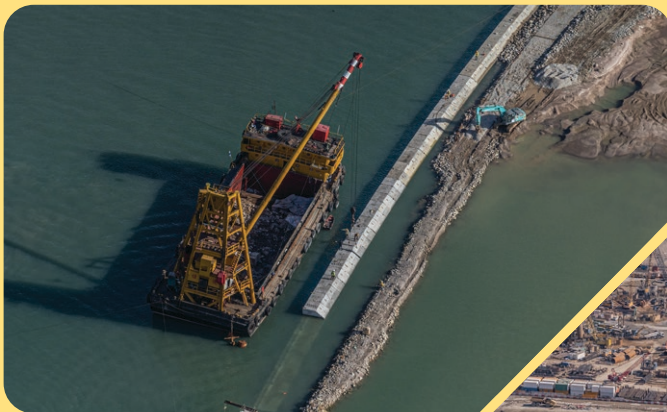
未來一季的主要工程 (2021年2月至4月) Major Construction Works in the Next Quarter (February to April 2021)

主要工程如下:

- 建造海堤
- 深層水泥拌合法工程
- 鋪設填海填料
- 安裝土力監察裝置
- 於新填海土地進行渠務工程

The major works include:

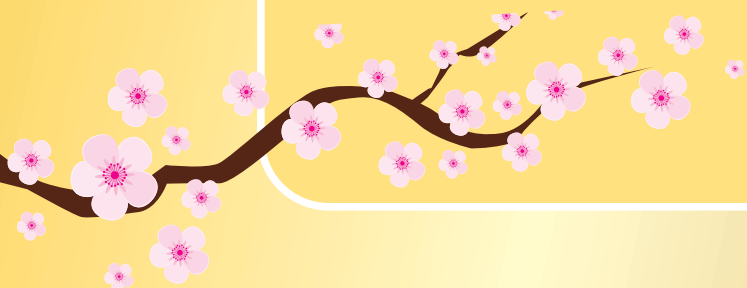
- Construction of seawall
- Deep cement mixing works
- Placing fill materials for reclamation
- Installation of geotechnical monitoring instrumentation
- Drainage works on new reclaimed land



建造海堤
Construction of seawall



於新填海土地建造箱形排水暗渠
Construction of drainage box culvert on new reclaimed land





社區聯繫 Community Engagement



與別不同的2020年聖誕節

A different Christmas in 2020

義工隊「友建地」在2019冠狀病毒病疫情下為社區帶來正能量及節日喜悅，為街坊準備多款聖誕禮物。於聖誕前，「友建地」透過不同途徑為長者、兒童及有需要人士等送上聖誕禮物，分享聖誕節的歡欣。

Aiming to bring positive energy and festive joy to the community amid the COVID-19 pandemic, the volunteer team "Builder" prepared various kinds of Christmas gifts for the neighbourhood. Before Christmas, the "Builder" gave Christmas gifts to the elderly, children, and people in need through various channels in order to share the joy of Christmas.



製作多款聖誕禮物與社區慶祝聖誕
Preparing various kinds of Christmas gifts for celebration of Christmas with the community



將聖誕禮物送到復康中心及長者中心
Giving Christmas gifts to the rehabilitation centres and elderly homes



最新2019冠狀病毒病資訊
Latest COVID-19 Information



<https://www.coronavirus.gov.hk/>

向立法會議員講解工程進度及環境緩解措施
Briefing the Legislative Council member about the progress of works and environmental mitigation measures





環境小組及獨立環境查核人 Environmental Team and Independent Environmental Checker

環境小組負責實施環境監察和審核計劃；根據環境監察和審核手冊確保工程對環境的可接受性；進行實地視察及審核承建商的工地作業及工作方法。獨立環境查核人負責審視、核實及審核工程的整體環境表現。

為有效減低工程對環境及附近社區的影響，工程團隊每月與環境小組及獨立環境查核人舉行環境管理會議。此外，環境小組及獨立環境查核人亦會參與聯合地盤巡查，向承建商及分判商了解工地最近進行的工程，以提出切實可行的方案改善環境表現。

The Environmental Team (ET) is responsible for implementing the Environmental Monitoring and Audit (EM&A) programme, certifying the environmental acceptability of construction works in accordance with the EM&A Manual, and carrying out site inspections and auditing the contractor's site practice and works methodologies. Independent Environmental Checker (IEC) is responsible for reviewing, verifying and auditing the overall environmental performance of the project.

In order to minimize the impacts to the environment and local community due to the construction works, environmental management meetings among the ET, IEC and project team are held on a monthly basis. In addition, the ET and IEC attend joint inspections with the contractor and sub-contractors to understand the latest works on-site so as to advise practicable measures for improving environmental performance.



環境小組、獨立環境查核人及承建商定期舉行聯合地盤巡查
Conducting regular joint inspections among the Environmental Team, Independent Environmental Checker and contractor



資訊與聯絡 Information and Enquiries

如欲了解更多資料，請瀏覽東涌新市鎮擴展工程項目網頁：

For further information, please visit the website of Tung Chung New Town Extension project:

<http://www.tung-chung.hk>



如對東涌新市鎮擴展一填海及前期工程有任何意見及建議，歡迎提出。

Your views and comments on Tung Chung New Town Extension – Reclamation and Advance Works are welcome.

24 小時熱線 24-hour hotline **5976 1853**
電郵 email **enquiry@nl201703-bsjv.com**