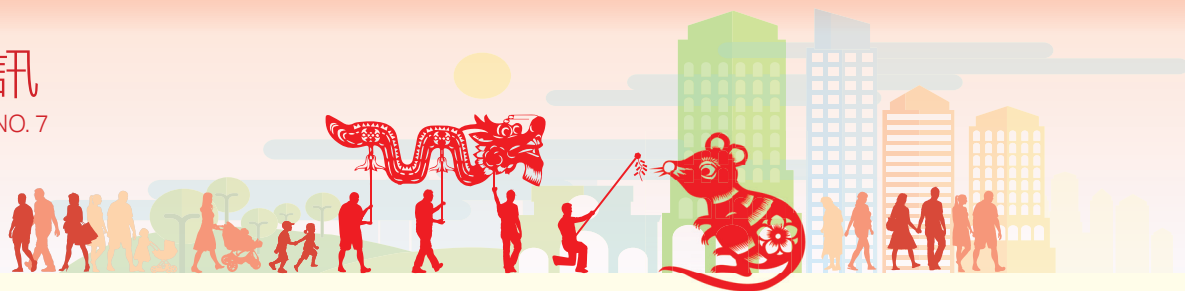


第七期通訊

NEWSLETTER ISSUE NO. 7

2020•02



歡迎參閱第七期東涌新市鎮擴展—填海及前期工程通訊，本通訊將介紹擬建生態海岸線，並提供工程進度及相關資訊

Welcome to our seventh issue of the newsletter for Tung Chung New Town Extension – Reclamation and Advance Works. This issue covers the proposed eco-shoreline, progress of reclamation works and relevant information.



生態海岸線 Eco-Shoreline

東新市鎮擴展-填海及前期工程是首個引入生態海岸線的工務工程，主要目的是在可行情況下加入模仿自然潮間帶的設計，以提供一個合適的生境給海洋生物生長，形成潮汐生態系統。考慮到海岸線附近的環境因素，例如水體的鹹淡度，相關位置會否受海浪沖擊及陽光是否充足等因素，我們將於新造海堤上的合適位置分別設置 (1)紅樹林生態海岸線；(2)岩石生態海岸線；以及 (3)直立式生態海岸線。三種生態海岸線全長約3.8公里。

我們已於小蠔灣設置了生態海岸線的試驗場，試驗項目包括監察生態設施，如紅樹林和生態磚的狀況，收集數據以進一步優化生態海岸線的設計。

Tung Chung New Town Extension – Reclamation and Advance Works is the first public works project adopting eco-shorelines, with the primary objective of mimicking the physical properties of natural inter-tidal zone as far as practicable, in a bid to provide a suitable habitat, namely a tidal eco-system, for colonisation of marine species. Taking into account the various environmental factors such as salinity of the water body, susceptibility of the shoreline to sea waves and abundance of sunlight, three types of eco-shorelines of total length about 3.8km would be provided at suitable locations along the new shoreline, namely (1) mangrove eco-shoreline; (2) rocky eco-shoreline; and (3) vertical eco-shoreline.

A trial site for eco-shoreline was set up at Siu Ho Wan to monitor the condition of ecological facilities including mangroves and bio-blocks. Results of trial would be used for refinement of eco-shoreline design.



紅樹林及岩石生態海岸線概念圖
Concept Plans of mangrove and rocky eco-shorelines



位於小蠔灣的生態海岸線試驗場
Trial site for eco-shorelines at Siu Ho Wan



工程進度 Works Progress

鋪設填海物料（包括砂墊層及公眾填料）及深層水泥拌合法工程仍繼續進行中。道路及渠務工程（文東路鄰近足球場）已大致完工，而於文東路、迎東路及迎禧路交界處的道路工程正進行中。

Placing of fill materials (including sand blanket and public fill) and deep cement mixing works are in progress. Road and drainage works (Man Tung Road near the football field) have been substantially completed. Road works at the junction of Man Tung Road, Ying Tung Road and Ying Hei Road are in progress.



東涌第五十八區 - 道路及渠務工程（文東路鄰近足球場）已大致完工
Tung Chung Area 58 - Road and drainage works (Man Tung Road near the football field) have been substantially completed



迎東邨對出的填海工程
Reclamation works outside Ying Tung Estate



未來一季的主要工程 (2020年2月至4月) Main Construction Works in Next Quarter (February to April 2020)

主要工程如下：

- 建造海堤
- 深層水泥拌合法工程
- 鋪設填海填料
- 安裝土力監察裝置
- 於新填海土地進行渠務工程
- 生態海岸線試驗

The major works include:

- Construction of seawall
- Deep cement mixing works
- Placing fill materials for reclamation
- Installation of geotechnical monitoring instrumentation
- Drainage works on newly reclaimed land
- Trial of Eco-Shoreline



獎項 Awards



香港綠色企業大獎2019
優越環保管理獎 - 項目管理(大型企業) - 銅獎
Hong Kong Green Awards 2019
Green Management Award – Project Management (Large Corporation) – Bronze Award



良好工作場所整理推廣計劃2019 - 銅獎
Good Housekeeping Promotional Campaign 2019 - Bronze Award



社區聯繫 Community Engagement

在去年的聖誕節，工程團隊與東涌居民(包括長者及小朋友)一同慶祝佳節，為社區增添聖誕節的喜悅。工程團隊亦向年青一代講解東涌發展並繼續參與不同的地區活動。

The project team celebrated Christmas with Tung Chung residents, including the elderly and children, which added to the festive joy in the community. The project team introduced the development of Tung Chung to the young generation and also actively engaged in different community activities in Tung Chung.



與長者慶祝聖誕節
Celebrating Christmas with the elderly



與居民玩遊戲，講解建築安全知識
Playing games and introducing construction safety with residents



與小朋友慶祝聖誕節
Celebrating Christmas with children



與長者遊戲
Playing games with the elderly



推動循環再用二手玩具
Promoting recycle of second-handed toys



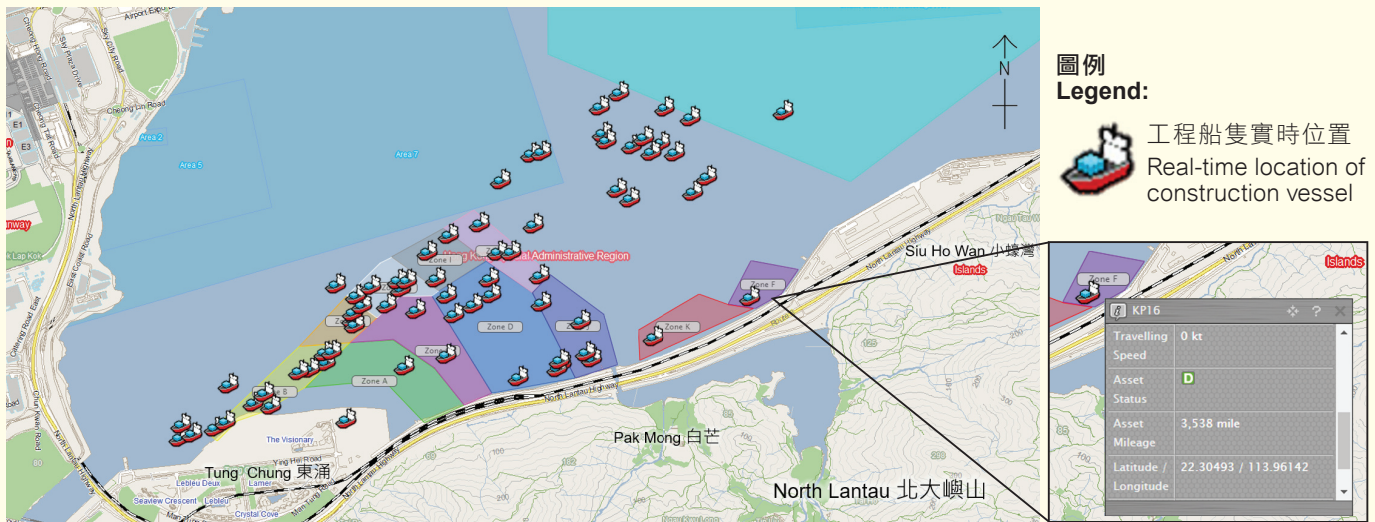
規劃工程船的航線 Vessel Trip Control

海上建築工程涉及到海上工程船，而工程船隻進出海上工地範圍時，或會對水質和附近海洋生態產生潛在影響。因此，本工程採取了一系列的緩解措施，以盡量減低工程船的航行次數，包括使用大型駁船及重複使用工地範圍內開挖和拆建時所產生的廢料。此外，工程船必須按照預定的路線航行，以限制工程船使用的海域。

另外，工程團隊會預先計劃工程船的活動，以減少往返施工現場的工程船隻的航行次數。工程團隊亦會實時監察工程船隻的航行路線、位置和行駛速度，以確保工程船隻按照計劃進行工程。

The marine construction works involve marine working vessels. These vessels will travel to and from the marine works areas and may impose potential impact on water quality and marine ecology. Therefore, the project team implements different mitigation measures including the use of large-sized barges to reduce the marine traffic; reuse of excavation, construction and demolition materials within the site to reduce waste generation from the project. Furthermore, all works vessels shall follow the designated routes so as to limit the extent of marine area used by vessels.

Besides, good planning of construction vessel activities is being implemented to minimize trips of vessels to and from the works site. The project team also carries out real-time monitoring of the route, location and speed of vessels closely to ensure the vessels are working according to the plan.



實時監察工程船的狀況
Real time monitoring of construction vessels



資訊與聯絡 Information and Enquiries

如欲了解更多資料，請瀏覽東涌新市鎮擴展工程項目網頁：

For further information, please visit the website of Tung Chung New Town Extension project:

<http://www.tung-chung.hk>



如對東涌新市鎮擴展 - 填海及前期工程有任何意見及建議，歡迎提出。

Your views and comments on Tung Chung New Town Extension – Reclamation and Advance Works are welcome.

24 小時熱線 24-hour hotline **5976 1853**
電郵 email **enquiry@nl201703-bsjv.com**