

## 第四期通訊

NEWSLETTER ISSUE NO. 4

2019•05

**歡**迎參閱第四期東涌新市鎮擴展－填海及前期工程通訊。本通訊將介紹非浚挖式填海流程並提供工程進度及相關資訊。

Welcome to our fourth issue of the newsletter for Tung Chung New Town Extension – Reclamation and Advance Works. This issue covers workflow of the non-dredged reclamation, progress of the construction works and relevant information.

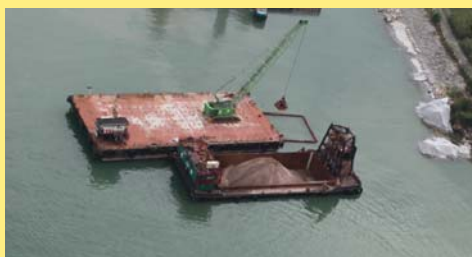


### 非浚挖式填海流程

### Workflow of non-dredged reclamation

東涌新市鎮擴展－填海及前期工程採用非浚挖方法，進行填海工程。面對複雜的施工環境，承建商施以合適的填海技術及程序，以克服不同的挑戰。

Tung Chung New Town Extension – Reclamation and Advance Works adopt non-dredged method for reclamation. Taking account of the complex site conditions, the contractor adopts suitable reclamation methods and procedures to tackle different challenges.



鋪設砂墊層以作預制垂直排水板的疏水通道  
Laying sand blanket which acts as drainage layer for the prefabricated vertical drains



放置公眾填料作為主要的填海物料  
Placing public fill as major reclamation material

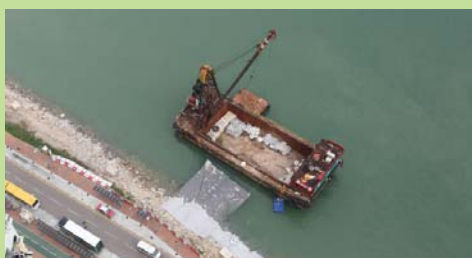
公眾填料 Public Fill

砂墊層 Sand Blanket

土工織物 Geotextile

海洋沉積土 Marine Deposit

預制垂直排水板 Prefabricated Vertical Drains



鋪設土工織物以保護海床  
Placing geotextile for seabed protection



安裝預制垂直排水板將海洋沉積土中的水分排走  
Installing prefabricated vertical drains to drain water away from the marine deposit



## 工程進度 Works Progress

搬遷海堤護面石及拆卸白芒碼頭已大致完成；鋪設填海物料(包括砂墊層及公眾填料)、深層水泥拌合法工程、建造臨時雨水排放系統、道路及渠務工程(文東路鄰近足球場)繼續進行中。

Relocation of armour rocks and demolition of Pak Mong Pier are nearly completed. Placing of fill materials (including sand blanket and public fill), deep cement mixing works, temporary storm drain construction, road and drainage works (Man Tung Road near football field) are in progress.



拆卸白芒碼頭  
Demolishment of Pak Mong Pier



迎東邨對出的填海工程  
Reclamation works outside Ying Tung Estate



深層水泥拌合法工程  
Deep cement mixing works



渠務工程(文東路)  
Drainage works (Man Tung Road)



## 未來一季的主要工程 (2019年5月至7月) Main Construction Works in Next Quarter (May to July 2019)

主要工程如下：

- 深層水泥拌合法工程
- 鋪設填海填料
- 安裝預制垂直排水板
- 安裝土力監測裝置
- 道路及渠務工程(文東路鄰近足球場)並實施臨時交通管理

The major works include:

- Deep cement mixing works
- Placing fill materials for reclamation
- Installation of prefabricated vertical drains
- Installation of geotechnical monitoring instrumentation
- Road and drainage works (Man Tung Road near football field) and temporary traffic management



## 社區聯繫 Community Engagement

填海工程正如火如荼地進行之際，工程團體亦積極融入東涌社區中。除與不同的持份者會面及持續溝通外，亦與地區組織合作(如護老院、學校、家庭服務中心)，籌辦不同主題的活動，以建立良好鄰里關係及愛心社區為目標。過去數月，工程團體舉辦了農曆新年聚會、環保學園、小小工程師日、愛心家訪等。

The project team actively engages in Tung Chung community while the reclamation works are in full swing. Apart from liaising meetings and continuous communication with stakeholders, the project team also works together with various local organizations (e.g. elderly homes, schools and family service centres) to organize activities of different themes with an aim to build a good neighborhood relationship and caring community. In the past few months, the project team organized the Chinese New Year Gathering, DIY Workshop, Junior Engineer Day and home visit etc.



與學生義工參與社區活動  
Actively participating in community services with student volunteers



與東涌家庭一同製作環保用品  
Making environmental friendly product with Tung Chung families



與長者慶祝農曆新年  
Celebrating Chinese New Year with the elderly



向東涌居民講解環境監測及緩解措施  
Sharing environmental monitoring and mitigation measures with Tung Chung residents



在小小工程師日向小朋友介紹土木工程及填海小知識  
Introducing knowledge about civil engineering and reclamation on Junior Engineer Day



## 環境監測及緩解措施 – 水質

## Environmental Monitoring and Mitigation Measures – Water Quality

水質監測是環境監察及審核計劃其中一環。現時設有七個水質監測站，並由環境小組於每週進行三次水質檢測及抽取海水樣本。而工程承建商亦積極執行不同的緩解措施，包括採用嶄新非浚挖填海技術、安裝外圍隔泥幕、設置籠式及框架式隔泥幕等。工程團隊亦會定期進行巡查，以確保建議的緩解措施有效落實。

Water quality monitoring is part of the environmental monitoring and audit program. There are 7 monitoring stations and the monitoring and water sample collection are carried out 3 times per week by the Environmental Team. The contractor also proactively implements various mitigation measures, such as application of innovative non-dredged reclamation technology, installation of perimeter silt curtain, setting up cage type and frame type silt curtain. The project team also carries out site inspection regularly to ensure the recommended mitigation measures are effectively implemented.



定期進行水質監測及抽取海水樣本作化驗  
Conducting regular water quality monitoring and taking water sample for analysis



設置框架式隔泥幕  
Setting up frame type silt curtain



安裝外圍隔泥幕  
Installing perimeter silt curtain



## 資訊與聯絡

## Information and Enquiries

如欲了解更多資料，請瀏覽東涌新市鎮擴展工程項目網頁：

For further information, please visit the website of Tung Chung New Town Extension project:

<http://www.tung-chung.hk>



如對合約編號：NL/2017/03 東涌新市鎮擴展 - 填海及前期工程有任何意見及建議，歡迎提出。

Your views and comments on “Contract No: NL/2017/03 Tung Chung New Town Extension - Reclamation and Advance Works” are welcome.

24 小時熱線 24-hour hotline

5976 1853

電郵 email

[enquiry@nl201703-bsjv.com](mailto:enquiry@nl201703-bsjv.com)